



The fortnightly news from Burton End Primary Academy

Burton Buzz

Issue 74

date: Friday 20th March 2026

A lovely sunny week!

It has been a dynamic fortnight in school with many things to celebrate. The children in Year 6 approached their mock SATs with ambition and resilience this week. The children in Year 1 represented the school on their trip and a fun time was had by all! I was blown away by the incredible speeches that have been heard across classrooms as part of our #hearmyvoice work. It was clear that the children across the school have a fantastic insight into a wide range of topics and presented their speeches with clarity, confidence and passion. We have ended our week with the musical talents of the Year 5 pupils in their cornet performance to parents this afternoon-thank you to parents for supporting the children with this at home also! It has been lovely to see the sun shining-I hope that it is here to stay and wish you all a lovely weekend.

Kelly Mace - Headteacher

Lots to be proud of

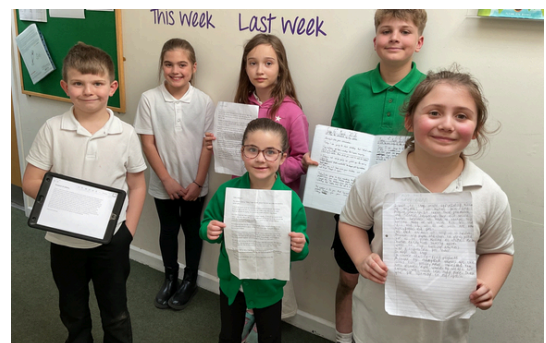
#hearmyvoice finalists

We held the final stages of the public speaking competition #hearmyvoice this week. The children delivered their speeches brilliantly on some thought-provoking topics.

Well done to Nancy Collins and Hanna Karpinska who were our KS1/KS2 finalists.

Hanna who will go forward to represent Burton End at the Keep Safe Day at Thomas Gainsborough School and we will look forward to sharing more details with you.

Well done Hanna & Nancy!



Respect values

It has been great to see how many children have been awarded silver stars for showing our Burton End value of Respect - this makes us very proud!



Lots of silver stars awarded

Musical performances from Year 5

Australia and New Zealand class invited their parents and carers to a musical performance of all the things they have been learning in their music lessons with Mrs Chester from Suffolk County Music. The children have worked so hard and were excited to be able to showcase this.



Great cornet playing and singing year 5!

Shepreth Wildlife Park

Year 1 had a great day at Shepreth Wildlife park consolidating their learning from science lessons by discussing some of the different ways which animals can be grouped:

- By what they eat (carnivore, omnivore or herbivore)
- By whether they are active at night (nocturnal or diurnal)
- By whether they have a backbone (vertebrates or invertebrates)

Pupils then let off some steam in the adventure playground before eating their packed lunches on the picnic benches.

They enjoyed observing lots of different animals. The capybara, meerkats, red pandas and big hairy armadillo were particular favourites. They were keen to look at the signs and learn facts about the different animals we saw



Capybaras normally live up to 10 years, whereas blue-and-gold Macaws can live for up to 50 years!



Year 1 enjoy a day at wildlife park

Online safety

Two online platforms to be aware of:

OMGKids and Emerald Chat

Emerald Chat and OMGKids are not appropriate for children and young people to use, as they contains harmful and age-inappropriate content, including highly sexual imagery and language.

Emerald Chat and OMGKids can both be accessed via web browser. While it does not currently have a mobile app, it can still be used on web browser apps (i.e. Safari).

Both are anonymous chat websites that encourages users to make new friends by engaging with strangers.

Emerald Chat states that all users must be over 18 years old.

OMGKids is a platform for teens ages 13-19, but accounts are easily made by anyone.

Please be vigilant if you hear yopur child talk about these.

Car park safety

For everyone's safety, we kindly ask that families avoid walking through the school car park. With cars moving in and out, it can be a risky area—especially for our children, who can be hard for drivers to see.

Please help us keep our school community safe by using the designated pedestrian paths and entrances at the start and end of the school day, as detailed below:

Nursery + KS2 - please use the gate to the right of the carpark that leads up to the bike shelter.

Office + Hub - please use the automated gate next door to Explorers/Adventurers.

Car park parking - please go via the steps to the walkway past the main office.

Thank you for your support in keeping our children safe and our school a safer place for everyone!

Access via padestrian pathways

Mr Newman's Sporting Roundup....

Last Tuesday our Burton End Year 6 football team came up against Kedington and came out 1-0 winners in a quite frustrating game where the ball seemed to be more attracted to the post than the net! This week our Year 6's came up against a very good Coupals team who had won 6 games out of 6 before our match, it was a very close match for the majority with both teams having chances but Coupals finished the stronger and came out with a 4-0 win to keep their winning run going. Next week our Year 5's are back in action after a little break, they are facing Linton Heights and the Year 6's are playing against Castle Camps.



On Tuesday we took our cross-country runners to the exciting Dickens' Dash event at Stoke College. This is a team cross country event with each member of the team of 4 running one lap of the 1.3km course before tagging the next person in. Our children had a great time and as always represented the school brilliantly showing great sportsmanship and resilience, not stopping until the very end!

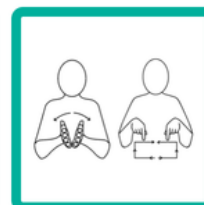
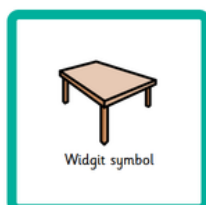
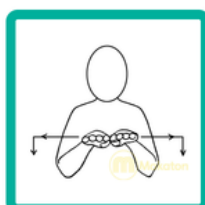
We have some very exciting news to share! This easter holiday we are going to be trialling a Burton End sports camp on Wednesday, 1st April. The day will run from 8:30 - 3:30, costs £15 and includes a lot of different sports, activities, games and most importantly, fun! This is something we are looking to introduce regularly, particularly over the summer holidays as a way to offer our children the opportunity to stay active and social over the holidays!

We are now **fully booked** for the April session but please look out for information on further dates.



Looking forward to longer, sunnier days next term with lots of sporting activities in the planning!

Makaton Signs of the Week








This week's focus is a key skill that requires lots of practice, with some children needing a little more help than others.

Fine motor skills

Fine motor skills involve the small muscles in the hands and fingers. Children use them for everyday tasks like writing, cutting, using cutlery, fastening buttons, drawing, and building. These skills develop gradually and support growing independence.

<p>In school</p> 	<p>We help children strengthen fine motor skills by using:</p> <ul style="list-style-type: none"> • Hand-strengthening activities such as playdough, tweezers, threading, and pegboards • Pre-writing patterns to develop pencil control • Fun, practical tasks like cutting shapes, building with blocks, or sorting small objects • Adapted tools when needed (chunky pencils, scissors with support, sloped boards)
<p>At home</p> 	<ul style="list-style-type: none"> • Encourage playdough, Lego, threading beads, and peg puzzles • Let children help with everyday jobs like stirring, squeezing bottles, pegging clothes, or opening packets • Practise buttons, zips, and laces in calm moments, not when rushing • Offer short drawing or colouring activities with chunky crayons or pencils
<p>Useful links</p> 	<p>https://www.royalwolverhampton.nhs.uk/wp-content/uploads/2025/06/Fine_Motor_Activity_Pack.pdf</p> <p>https://napacentre.co.uk/fine-motor-activities/</p>

Spotlight on fine motor skills

Fortnightly Feel-Good with Miss Holt

This week I have a wellbeing toolkit. Let's think about all the different things that make us happy. These things make up our 'wellbeing toolbox'. You can put all sorts of things in your wellbeing toolbox. Anything can go in it!

Have a go and dip into it when needed.

Catch up soon,
Miss Holt



Fill up your wellbeing toolbox!

Use these pages to write down things you could put in your wellbeing toolbox.

CONNECTING - Who do you like to spend time with? What do you like to do with them?

GIVE TO OTHERS - Is there someone you'd like to give a helping hand to?

GETTING ACTIVE - What sort of exercise and sports do you enjoy? How can you move more in the day?

TAKE NOTICE - Where's your favourite place to sit quietly? What are your favourite things to see and hear?

KEEP LEARNING - What things would you like to learn to do? Are there subjects you'd like to know more about?

How do you fill up your wellbeing toolbox?

Diary Dates

March 2026

Thursday 26th	3.30-430	Burton Bees: Spring Disco	Years 1 - 3
Thursday 26th	5.00 - 6.00	Burton Bees: Spring Disco	Years 4 - 6
Friday 27 th	3:25	End of Spring term 2 - Easter Holidays	All year groups

April 2026

Monday 13th	all day	Children return to school	All years
-------------	---------	---------------------------	-----------



Term Dates 2025-2026

September 2025	October 2025	November 2025
Mo Tu We Th Fr Sa Su 1 2 3 4 5 6 7 8 9 10 11 12 13 14 15 16 17 18 19 20 21 22 23 24 25 26 27 28 29 30	Mo Tu We Th Fr Sa Su 1 2 3 4 5 6 7 8 9 10 11 12 13 14 15 16 17 18 19 20 21 22 23 24 25 26 27 28 29 30 31	Mo Tu We Th Fr Sa Su 1 2 3 4 5 6 7 8 9 10 11 12 13 14 15 16 17 18 19 20 21 22 23 24 25 26 27 28 29 30
December 2025	January 2026	February 2026
Mo Tu We Th Fr Sa Su 1 2 3 4 5 6 7 8 9 10 11 12 13 14 15 16 17 18 19 20 21 22 23 24 25 26 27 28 29 30 31	Mo Tu We Th Fr Sa Su 1 2 3 4 5 6 7 8 9 10 11 12 13 14 15 16 17 18 19 20 21 22 23 24 25 26 27 28 29 30 31	Mo Tu We Th Fr Sa Su 1 2 3 4 5 6 7 8 9 10 11 12 13 14 15 16 17 18 19 20 21 22 23 24 25 26 27 28 29
April 2026	May 2026	June 2026
Mo Tu We Th Fr Sa Su 1 2 3 4 5 6 7 8 9 10 11 12 13 14 15 16 17 18 19 20 21 22 23 24 25 26 27 28 29 30	Mo Tu We Th Fr Sa Su 1 2 3 4 5 6 7 8 9 10 11 12 13 14 15 16 17 18 19 20 21 22 23 24 25 26 27 28 29 30 31	Mo Tu We Th Fr Sa Su 1 2 3 4 5 6 7 8 9 10 11 12 13 14 15 16 17 18 19 20 21 22 23 24 25 26 27 28 29 30

Bank holidays ■ Staff PD Days (school closed to pupils) ■ School Holidays ■



Term Dates 2026-2027

September 2026	October 2026	November 2026
Mo Tu We Th Fr Sa Su 1 2 3 4 5 6 7 8 9 10 11 12 13 14 15 16 17 18 19 20 21 22 23 24 25 26 27 28 29 30	Mo Tu We Th Fr Sa Su 1 2 3 4 5 6 7 8 9 10 11 12 13 14 15 16 17 18 19 20 21 22 23 24 25 26 27 28 29 30 31	Mo Tu We Th Fr Sa Su 1 2 3 4 5 6 7 8 9 10 11 12 13 14 15 16 17 18 19 20 21 22 23 24 25 26 27 28 29 30
December 2026	January 2027	February 2027
Mo Tu We Th Fr Sa Su 1 2 3 4 5 6 7 8 9 10 11 12 13 14 15 16 17 18 19 20 21 22 23 24 25 26 27 28 29 30 31	Mo Tu We Th Fr Sa Su 1 2 3 4 5 6 7 8 9 10 11 12 13 14 15 16 17 18 19 20 21 22 23 24 25 26 27 28 29 30 31	Mo Tu We Th Fr Sa Su 1 2 3 4 5 6 7 8 9 10 11 12 13 14 15 16 17 18 19 20 21 22 23 24 25 26 27 28 29 30
April 2027	May 2027	June 2027
Mo Tu We Th Fr Sa Su 1 2 3 4 5 6 7 8 9 10 11 12 13 14 15 16 17 18 19 20 21 22 23 24 25 26 27 28 29 30	Mo Tu We Th Fr Sa Su 1 2 3 4 5 6 7 8 9 10 11 12 13 14 15 16 17 18 19 20 21 22 23 24 25 26 27 28 29 30 31	Mo Tu We Th Fr Sa Su 1 2 3 4 5 6 7 8 9 10 11 12 13 14 15 16 17 18 19 20 21 22 23 24 25 26 27 28 29 30

Bank holidays ■ Staff PD Days (school closed to pupils) ■ School Holidays ■

To be confirmed

BURTON END PRIMARY ACADEMY

WOW WEDNESDAY!

WELCOME TO OUR CLASSROOMS

A monthly chance to come and visit your child's classroom to take part in an activity or see the excellent work they have been doing!

3.00PM UNTIL THE END OF THE DAY

DATES

20th May 2026
17th June 2026

If you have more than one child in school we ask that you attend only one classroom per WOW Wednesday to allow us to make sure we can manage visitors in school in line with our safeguarding procedures. We have provided the dates so you can plan which child you will visit on which date.

Burton Bees

SPRING Disco

FOOD * MUSIC * DANCE

THURSDAY | 26TH | MARCH

YEAR 1-3
3:30 - 4:30PM

YEAR 4-6
5:00 - 6:00PM