



The fortnightly news from Burton End Primary Academy

# Burton Buzz

Issue 73

date: Friday 6th March 2026

## Two Weeks of Hard Work, Pride, and Community

*What a varied and busy fortnight we have enjoyed at Burton End! It has been fantastic to see the children working hard in their classrooms and enjoying all of the additional activities that we have been offering over the last two weeks. I have been inspired by the children's thoughts around the speeches that they have been composing as part of Keep Safe Month. I am looking forward to hearing them over coming weeks. I have also been a very proud Headteacher this week due to some feedback from a member of our local community (see below) and a visit from our Chair of Governors this morning where children spoke about our school with openness and confidence. It was great to see so many of you at our recent parents evenings and WOW Wednesday-I know that staff and children really appreciate and value the support that you provide to the school. Have a fantastic weekend!*

*Kelly Mace - Headteacher*

Thank you for helping our school community continue to flourish

## World Book Day

Look at all the fantastic costumes celebrating World Book Day! The school enjoyed a day of reading activities, story telling and creative writing.



Fantastic costumes!

## Keep Safe Month

This Month is Keep Safe Month!



This year Unity School Partnership are inviting every child to share their voice #Hearmyvoice.

We know how important being heard is in feeling you belong and are safe in school.

At Burton End in classes from Y2-Y6 children are writing speeches on any topic that is important to them.

In each class one speech will be nominated to be performed to a panel of judges and the best speaker will be invited to attend Keep Safe Day at Thomas Gainsborough School.

Children share their voices

## WOW Wednesday - Science Stem

Thank you to all of you that attended or engaged at home with our Science/STEM WOW Wednesday, the children really enjoyed exploring the best way to make a paper aeroplane and I think the adults did too! Such a simple activity, opens many opportunities for learning, discussion and resilience - so thank you again for your engagement with this. The class flights took place on Thursday and some today, with the final flights taking place this afternoon - winners from these were given a prize. Well done everybody!



Next Wow Wednesday 20<sup>th</sup> May

## Kindness feedback

We had a phone call from a member of the public (not affiliated with the school) to say that she was out walking with her mum who has dementia. Their daily walk usually coincides with the school run and seeing the children laughing and playing brings her mum joy. Yesterday they passed a little boy dressed as Lord Woodhouse mouse for world book day and it created a lucid moment for her mum who remembered her daughter's name and how she used to read it to her. She was very emotional and just wanted to call to say that this created such a special moment for her and how polite the children from Burton End are when they see the children on their daily walk.

**Well done Burton End for displaying our school value of kindness**

## Eggcellent Easter Tracker

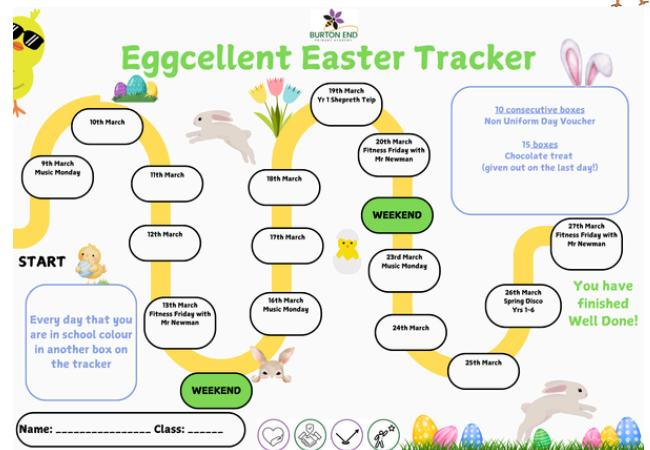


All of the children have received our 'Easter Tracker' challenge sheet which starts on Monday.

Children colour in the squares for each day they attend school with a chance of 2 prizes for 10 and/or 15 consecutive days.

With the 10 day prize children will be given a non uniform day voucher and can choose to use this when they would like to anytime during the academic year.

15 day prize children will also receive a chocolate treat which will be given out on the last day of term!



**10 consecutive days = non uniform, 15 = Chocolate**

## Mr Newman's Sporting Roundup....

On Tuesday our Year 6's took part in a very tough match against Westfield, who are top of the league. We narrowly lost 2-1 but kept trying right until the very end and were very unlucky not to score more goals. Unfortunately, our Year 5's opponents didn't turn up for the game but on the bright side it will go down as a 5-0 win for Burton End. No game for the Year 5's next week but the Year 6's will be playing against Kedington.

Today we have been taking part in let girls play day! Let Girls Play day is an annual, nationwide English campaign, often coinciding with International Women's Day in March, aimed at ensuring equal access to football for girls in schools. Supported by The FA and Barclays, it features the "Biggest Ever Football Session," where thousands of schools promote girls playing sports to boost physical and mental health. All of our girls from Year 1-6 took part in a 30-minute football session where they played some mini matches, worked as a team with lots of encouragement and most importantly had lots of fun! Over the next couple of weeks, we have a cross-country event as well as more football fixtures as we head into a busy time of year! As always thank you for your continued support.



**Football mania!**

## Fortnightly Feel-Good with Miss Holt

Hello everyone, what a wonderful sight it is to see the sun finally shining, I can already feel the winter blues fading away!

Today, I am going to share a local resource that supports children with their emotional wellbeing.

Jot the friendly robot is an animated character that helps children talk about how they are feeling when they are sad or worried. The 'Jot the friendly robot' campaign resources below provide a fun way to assist parents, carers, teachers and educational settings in supporting children with emotional literacy (managing difficult emotions) in the classroom or at home.

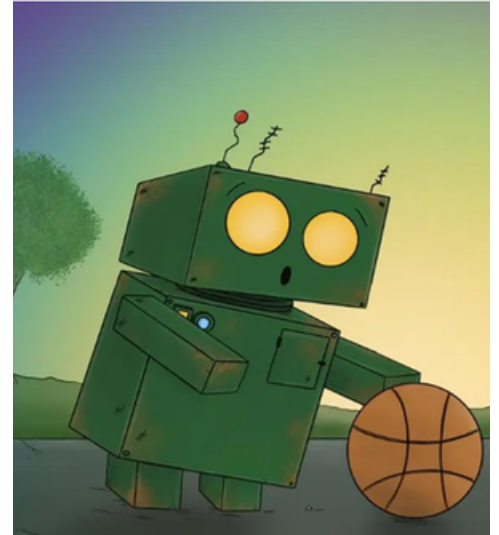
Click the link for lots of amazing resources:

<https://www.suffolk.gov.uk/children-families-and-learning/wellbeing-in-education/emotional-wellbeing-support-for-primary-school-children>

You can also watch the series of animations featuring Jot the Friendly Robot, where he shares wellbeing tips. The animations help children learn about things that may help them when they feel sad or worried.

Take care, and keep smiling!

## Meet Jot the Friendly Robot



## Jot the friendly robot shares wellbeing tips




## SEND Spotlight with Mr Austin-Guest



This SEND Spotlight is another common area almost all children have difficulty with from one time to another.

### Managing emotions

A child's ability to understand, express and manage feelings in a healthy way. This includes recognising emotions, calming down when upset and choosing appropriate responses in different situations.

<b>In school</b> 	We support children by using our whole school approach <i>Zones of Regulation</i> to help them identify and name their feelings. We also model language for emotions e.g. 'I'm tired, I think I need a cup of tea'. As part of our everyday curriculum offer, tasks are broken down into small manageable steps to reduce stress and overwhelm.
<b>At home</b> 	Simple things make a big difference: <ul style="list-style-type: none"><li>• Notice and name feelings together (e.g. 'it looks like you might be a bit sad')</li><li>• Keep routines predictable wherever possible</li><li>• Praise small wins when your child manages emotions well</li></ul>
<b>Useful links</b> 	<a href="https://www.nhsborders.scot.nhs.uk/media/1001858/Zones-of-Regulation.pdf">https://www.nhsborders.scot.nhs.uk/media/1001858/Zones-of-Regulation.pdf</a> <a href="https://suffolkfamilycarers.org/emotional-regulation-the-iceberg-and-the-window-of-tolerance/">https://suffolkfamilycarers.org/emotional-regulation-the-iceberg-and-the-window-of-tolerance/</a>

## Spotlight on managing emotions

## Parking

The white zigzag lines on the road indicate areas where parking is prohibited. These lines are typically found near pedestrian crossings and are enforced 24/7 without exceptions, meaning drivers cannot park in these areas at any time. They are designed to ensure safety by preventing vehicles from obstructing pedestrian's views when crossing the road.

Please follow this link for more information:

<https://assets.publishing.service.gov.uk/media/560aa6c7ed915d035900001a/the-highway-code-road-markings.pdf>

Please do not park on zigzags

## Allergies

Some of our children risk suffering a life threatening reaction to nuts - even by simply being in the vicinity of a nut. For this reason we ask that no child brings any food items into school that contains nuts, even for their own consumption.

We are a nut free school



## After school clubs

**BURTON END PRIMARY ACADEMY**  
**AFTER SCHOOL CLUBS**  
Spring Term 2  
Clubs Start w/b 2nd March  
Clubs run from 3.25pm to 4.15pm

**Monday**

- Multi Sports- Years 1 & 2**  
Play a range of sports to develop your core skills
- Origami/Arts & Crafts- Years 1-3**  
Learn to make animal origami & Easter crafts

**Tuesday**

- Dodgeball Years 5 & 6**  
Join in with matches and practice hand eye co-ordination
- Children's University Years 1-6**  
A range of different activities for children to enjoy, including arts & crafts, music & games.
- Knit & Natter Years 3-6**  
Learn to knit a coaster whilst having a natter
- Sewing Club Years 3-6**  
Learn to sew & make a bookmark
- Colouring Club Years 1-6**  
The opportunity be mindful with drawing & colouring

**PLEASE SIGN YOUR CHILD UP THROUGH THE ARBOR PARENT PORTAL  
LAST WEEK OF CLUBS W/B 23<sup>RD</sup> MARCH**

We still have some spaces in the following clubs after school:

**Monday**

Multi- Sports  
Year 1 & 2



**Tuesday**

Dodgeball  
Year 5 & 6

Sewing club  
Years 3 - 6

Children's University  
Years 1 - 6



The clubs will run until Easter after which a new club list will start - details will follow last week of term.

Spaces available - book via Arbor

# Makaton Signs of the Week



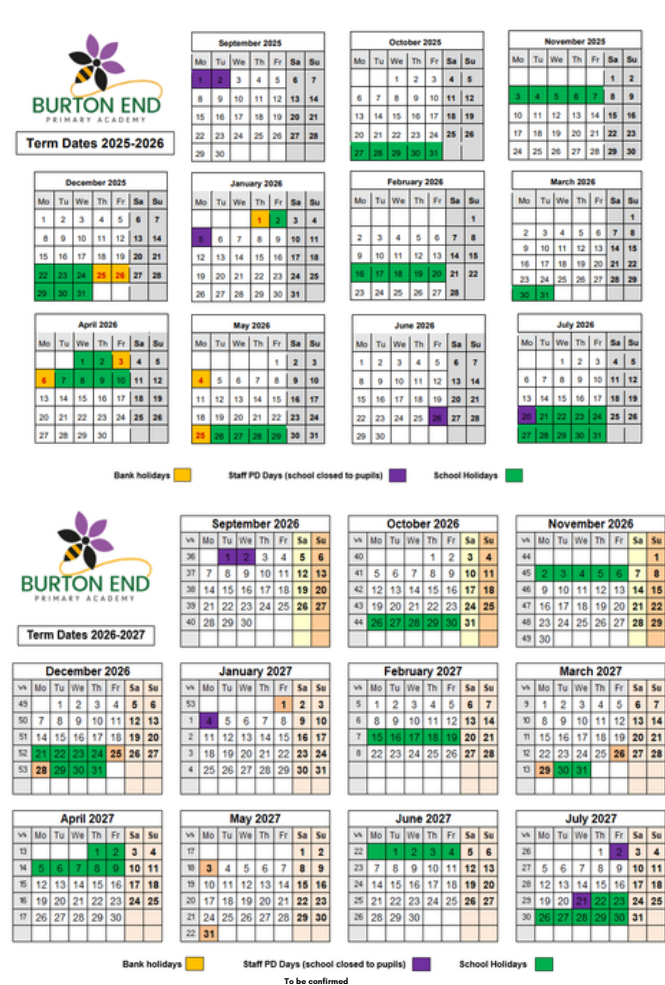
## Diary Dates

### March 2026

Thursday 19th	all day	Shepreth Wildlife Park	Year 1
Friday 20th	2.30	Cornet performance - details to follow	Year 5
Friday 27th	3:25	End of Spring term 2 - Easter Holidays	All year groups

### April 2026

Monday 13th	all day	Children return to school	All years
-------------	---------	---------------------------	-----------



**BURTON END PRIMARY ACADEMY**

# WOW WEDNESDAY!

**WELCOME TO OUR CLASSROOMS**

A monthly chance to come and visit your child's classroom to take part in an activity or see the excellent work they have been doing!

**3.00PM UNTIL THE END OF THE DAY**

**DATES**

20<sup>th</sup> May 2026  
17<sup>th</sup> June 2026

If you have more than one child in school we ask that you attend only one classroom per WOW Wednesday to allow us to make sure we can manage visitors in school in line with our safeguarding procedures. We have provided the dates so you can plan which child you will visit on which date.