



The fortnightly news from Burton End Primary Academy

Burton Buzz

Issue 70

date: Friday 30th January 2026

Creativity and Community!

Thank you to all the parents who took the time to share their feedback last week—your thoughts are genuinely appreciated and help us continue to grow as a school community. We are incredibly proud of the many children who completed their assessments this week; they demonstrated fantastic resilience, determination, and a positive attitude throughout. It was also wonderful to see so many of you at WOW Wednesday. Today the whole school was buzzing with creativity and excitement during our Art Festival, I am looking forward to seeing the children's artwork displayed in the corridors throughout the school.

Have a lovely weekend.

- Kelly Mace - Headteacher

A joyful week filled with creativity, resilience and determination

Parent Surveys

Thank you to those parents who shared their feedback using the QR codes that were shared on the last issue of the Burton Buzz. Your feedback is valued and will be taken on board. This week I wanted to share with you the key areas that many parents identified as things that they really value about Burton End as well as some specific quotes.

They are:

- Staff engagement and willingness to listen to any concerns
- Wow Wednesdays
- Excellent communication re whole school matters such as whole school events on dojo and the Burton Buzz.
- The after school clubs
- Music on the gate on a Monday

"Staff at Burton End that really do care about the children and their education."

"Teachers seem to enjoy what they do and always have a smile on their face."

Thank you for sharing your views

Art Festival

The theme for the Art Festival this year is:

'What is art and why is it so important to the world?'

The children have taken part in digital art activities, watched inspirational artists share their story and completed a piece of artwork using all the knowledge they have gained so far this year.



Great artwork Burton End

Car park

For everyone's safety, we kindly ask that families avoid walking through the school car park. With cars moving in and out, it can be a risky area—especially for our children, who can be hard for drivers to see. Please help us keep our school community safe by using the designated pedestrian paths and entrances. Thank you for your support in keeping our children safe and our school a safer place for everyone!

Access via the pathway next to the office

Fortnightly Feel-Good with Miss Holt

This fortnight's reflection invites you to pause and consider:

- ***One thing that has gone well this week***
- ***One thing you would like to do differently next week***



As a mum myself, I know how busy mornings can be—rushing around and trying to get everyone out of the door on time. Here are a few simple ideas to help make mornings calmer:

Be prepared

Lay out clothes, pack school bags, and prepare lunches the night before. This reduces the number of tasks in the morning and helps avoid last-minute scrambles.

Set a consistent wake-up time

Establishing a regular wake-up time allows enough time for everyone to get ready without rushing. Consistency also helps regulate children's internal clocks, making waking up easier.

Think of yourself too

If possible, try waking up 15–30 minutes before the children to prioritise a little self-care, such as enjoying a quiet coffee, stretching, or a short walk. Starting the day calmly can set a positive tone for everyone.

Wellbeing tips to support our children and families

Mr Newman's Sporting Roundup....

It has been a great start to the year from the sporting side of Burton End. We have had lots of great activities on during lunch time with music playing and some really bad attempts at the latest Tiktok dances from Mr Newman!

Last Wednesday, some of our Year 4's made the trip up to Samuel Ward to participate in some Dodgeball matches against Coupals. It was fantastic to see the children having so much fun and really embracing the team culture in supporting and cheering on their team mates. As

always when we take a team to an event, they represented the school so well and really showed off the Burton End values and a big thank you to Miss Iron for braving the weather and supporting this event with us.

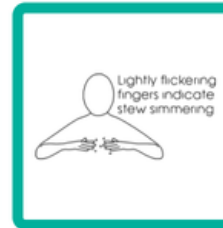
Next Friday we have an exciting event for our Year 6's athletes! After winning the local qualifying event in November we will be making the journey to Ipswich to take part in the Sportshall Athletics county finals, taking on the best of the best in Suffolk. If we needed anymore motivation to try our very best Mr Almond and his new school will also be in attendance! Good luck to our Year 6's.

As always, a very busy term with plenty more to come after the half term break with football fixtures returning and a cross country event. Thank you for your continued support!



Well done Year 4 Dodgeballers!

Makaton Signs of the Week



Dairy Dates

February 2026

Friday 13 th	All day	End of Spring term 1	All year groups
Monday 23 rd	All day	Children return to school	All year groups
Tuesday 24 th	3:40-7:00pm	Parent/Teacher consultations	All year groups
Wednesday 25 th	3:40-6:00pm	Parent/Teacher consultations	All year groups
Thursday 26 th	3.30-6.00pm	Parent/Teacher consultation	Iceland class only

March 2026

Wednesday 4 th	3pm	Wow Wednesday	All year groups
Friday 20 th	TBC	Cornet performance - details to follow	Year 5
Friday 27 th	3:25	End of Spring term 2 - Easter Holidays	All Year groups



Term Dates 2026-2027

September 2026

Wk	Mo	Tu	We	Th	Fr	Sa	Su
36		1	2	3	4	5	6
37	7	8	9	10	11	12	13
38	14	15	16	17	18	19	20
39	21	22	23	24	25	26	27
40	28	29	30				

October 2026

Wk	Mo	Tu	We	Th	Fr	Sa	Su
40				1	2	3	4
41	5	6	7	8	9	10	11
42	12	13	14	15	16	17	18
43	19	20	21	22	23	24	25
44	26	27	28	29	30	31	

November 2026

Wk	Mo	Tu	We	Th	Fr	Sa	Su
44							1
45	2	3	4	5	6	7	8
46	9	10	11	12	13	14	15
47	16	17	18	19	20	21	22
48	23	24	25	26	27	28	29
49	30						

December 2026

Wk	Mo	Tu	We	Th	Fr	Sa	Su
49		1	2	3	4	5	6
50	7	8	9	10	11	12	13
51	14	15	16	17	18	19	20
52	21	22	23	24	25	26	27
53	28	29	30	31			

January 2027

Wk	Mo	Tu	We	Th	Fr	Sa	Su
53					1	2	3
1	4	5	6	7	8	9	10
2	11	12	13	14	15	16	17
3	18	19	20	21	22	23	24
4	25	26	27	28	29	30	31

February 2027

Wk	Mo	Tu	We	Th	Fr	Sa	Su
5	1	2	3	4	5	6	7
6	8	9	10	11	12	13	14
7	15	16	17	18	19	20	21
8	22	23	24	25	26	27	28

March 2027

Wk	Mo	Tu	We	Th	Fr	Sa	Su
9	1	2	3	4	5	6	7
10	8	9	10	11	12	13	14
11	15	16	17	18	19	20	21
12	22	23	24	25	26	27	28
13	29	30	31				

April 2027

Wk	Mo	Tu	We	Th	Fr	Sa	Su
13				1	2	3	4
14	5	6	7	8	9	10	11
15	12	13	14	15	16	17	18
16	19	20	21	22	23	24	25
17	26	27	28	29	30		

May 2027

Wk	Mo	Tu	We	Th	Fr	Sa	Su
17					1	2	
18	3	4	5	6	7	8	9
19	10	11	12	13	14	15	16
20	17	18	19	20	21	22	23
21	24	25	26	27	28	29	30
22	31						

June 2027

Wk	Mo	Tu	We	Th	Fr	Sa	Su
22		1	2	3	4	5	6
23	7	8	9	10	11	12	13
24	14	15	16	17	18	19	20
25	21	22	23	24	25	26	27
26	28	29	30				

July 2027

Wk	Mo	Tu	We	Th	Fr	Sa	Su
26				1	2	3	4
27	5	6	7	8	9	10	11
28	12	13	14	15	16	17	18
29	19	20	21	22	23	24	25
30	26	27	28	29	30	31	

Bank holidays

Staff PD Days (school closed to pupils)

School Holidays

To be confirmed



WOW WEDNESDAY!

WELCOME TO OUR CLASSROOMS

A monthly chance to come and visit your child's classroom to take part in an activity or see the excellent work they have been doing!

3.00PM
UNTIL THE END OF THE DAY

DATES

4th March 2026
20th May 2026
17th June 2026

If you have more than one child in school we ask that you attend only one classroom per WOW Wednesday to allow us to make sure we can manage visitors in school in line with our safeguarding procedures. We have provided the dates so you can plan which child you will visit on which date.



How we communicate at Burton End



Arbor

Updates, copies of letters, newsletters and important information is sent via Arbor and will appear in your email inbox.

Please keep your email address up to date so that you can continue to receive information; you can update your contact information by logging into your Arbor account. The school will receive notification of any changes.

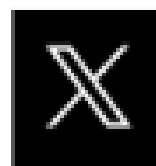


ClassDojo

Class Dojo is a school communication platform to share learning that has taken place in classrooms through photos, videos and messages. The school will invite you via email to join class Dojo and once accepted you will see whole school and year group specific updates.

There is a messaging facility in the app. Please remember during the school day teachers are teaching and do not have time to pick up messages (these should be directed to the School Office). Teachers are able to pick up messages and reply between the 'open hours' of 8am and 5pm but not during the school day when they are teaching.

Snippets of information, celebrations and updates can be found here. If you have any urgent questions or messages, please do not message via social media as these may not be checked in time—please telephone the school office.



BURTON BUZZ



This is our fortnightly newsletter which includes lots of information for parents and carers about what is happening in school and what is coming up in the future.

The diary dates section is regularly updated. By sending one newsletter out every other week it saves the need for us to be sending lots of letters out individually. We add to ClassDojo send out via ParentMail and display a copy on our noticeboard and on the website.