



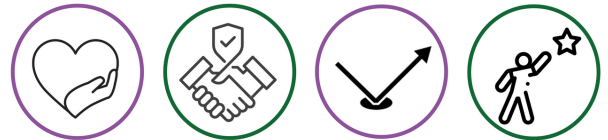
BURTON BUZZ

The first six weeks of the school year have flown by it is always an important term as children settle into their new classrooms and their new routines. It was great to be able to share with parents and carers the children's successes at Parents' Evening this week it was lovely to see many of you and hear all of your positive comments. Of course you don't have to wait until Parents' Evening if you have any questions or concerns we are always here for a quick catch up or an informal chat.

It was a rather wet end to this half term on Friday thank you for your patience and understanding. Whenever there are extremes of weather our priority, of course, is always the safety of the children and staff. We have to make decisions based on our school circumstances which may differ from other local schools. It did mean that we were unable to enjoy our Harvest assembly together in the hall. However, children were able to share in the assembly in their classrooms. Have a look on Class Dojo for our Head Boy and Head Girl performing a poem they had planned to share in the assembly. Thank you for your kind donations these will be split between our Top Up Shed (see below) and the Foodbank in Haverhill.

It is the last day of term today. We hope the children have a great half term. We look forward to seeing everyone again at 8.35am on Monday 6th November.

Graham Almond - Headteacher



ATTENDANCE MATTERS!

This week Mr Almond and Mrs Bowmer (Attendance Officer) met with Mrs Mayhew who is our Education Welfare Officer to review attendance. We are pleased that we are working towards our 96% target for the whole school. To put it very simply the more often your child is in school the greater their chance of success.

If you are struggling with attendance or have any concerns please do arrange to come and meet with us. Likewise we will invite you to talk to us in school if we notice your child's attendance is not as frequent as it should be. By working together we help to support you.

AFTER SCHOOL CLUBS

After School Clubs for the second half of the Autumn Term went live yesterday on Clubbly. Please do take a look there are lots on offer for your children. Clubs for our Reception children will start after Christmas whilst they settle into the long school days. Please remember to ensure your child attends each week as often clubs are over subscribed.

TOP UP SHED

Our Top Up Shed is there for our whole school community to access. It is located at the back of the car park and is open every day. We all know from time to time we all need a little help. Please do not worry about popping along.



Be a Burton End

ATTENDANCE HERO



Here Everyday

Ready to Learn!

On time! - 8.35am

OCEAN POINTS

Each child is placed into one of our 5 Ocean Teams and they earn Ocean Points for their team by demonstrating our school values, trying their hardest, using their manners and producing excellent work.

Today we totalled up the Ocean Points and our winning team was crowned. Well done Arctic Bears! Your flag will fly proudly at the front of school.

LEST WE FORGET

On Friday 10th November we will take sometime to remember those that have made the ultimate sacrifice for our freedom as this is the closest school day to 11th November. During the first week back each class will make a poppy wreath and we will hold our special Remembrance service.

In the first week after half term we will have poppies and some other merchandise on sale for a small recommended donation (cash please) - please see the update on Class Dojo for more information.



NEW WEBSITE

Our new school website is now live. We will be making the finishing touches and refining the content over the Half Term holiday but please do take a look. If there is any information that you cannot see or feel it would be useful to add please do let the School Office know. We appreciate your feedback.

CHILDREN IN NEED

We will be supporting Children in Need on 17th November 2023, children can come to school in non-uniform for a donation.



STARTING SCHOOL IN 2024


We have organised two open events for those parents and carers who have children due to start school in September 2024. These may be families with younger children who have children of school age or families who are new to our school. They are on:

- **Wednesday 8th November 2023 at 2.00pm**
- **Monday 13th November 2023 at 9.30am**

If you have any friends or family who would like to see our school in action please encourage them to come and look around on one of those days.



BURTON END PRIMARY ACADEMY



RECEPTION 2024 INTAKE OPEN EVENTS

COME AND FIND OUT MORE ABOUT OUR SCHOOL AND EARLY YEARS


Wednesday 8th
November 2023
2.00pm



Monday 13th
November 2023
9.30am



MEET OUR TEACHERS, TOUR OF THE SCHOOL INCLUDING EARLY YEARS AND A CHANCE TO ASK QUESTIONS.



READING CHALLENGE

Mr Boddington has set the whole school a Half Term Reading Challenge. Take a look on Class Dojo all the children that enter will get a certificate and we will hold a prize draw for all that enter to win a brand new book!



OUR MAKATON SIGNS OF THE WEEK



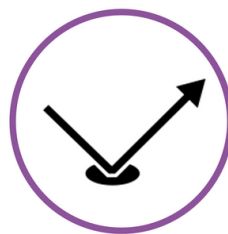
BURTON END PRIMARY ACADEMY: CALENDAR 2023-2024

NOVEMBER

Monday 6th November	8.35am	Back to School	All year groups
Thursday 9th November	3.40pm	Parents' Evening	Jamaica class
Friday 17th November	All day	Children in Need: Non Uniform Day	All year groups
Monday 20th November	All day	Duxford Trip	Year 6

DECEMBER

Tuesday 5th December	Morning	Flu Vaccination catch up	Children who missed it before
Thursday 14th December	2.00pm	Christmas Play	Reception and Year 5
Friday 15th December	9.15am	Christmas Play	Reception and Year 5
Monday 18th December	2.30pm	A Christmas 'Sing a long'	Year 1 and Year 2
Wednesday 20th December	3.15pm	Key Stage 2 Carols on the Playground (parents welcome)	Year 3,4,5,6
Thursday 21st December	3.25pm	Last day of Autumn Term	All year groups



Publish date: 06/02/19

What parents need to know about AGE RATINGS



If you have children, it is understandable to have concerns about the films and TV shows they watch, as well as the games they play. In this guide, we take a look at the two official ways you can assess if a particular title is suitable for your child. Both the BBFC and PEGI have search facilities on their websites that can be used to look up individual titles so you can check their ratings.




RATINGS FOR FILMS, TV & MUSIC VIDEOS

Since 1912, the BBFC (British Board of Film Classification) has informed UK residents of the age suitability of films, TV and music videos - providing parents with the information needed to assess whether or not it is appropriate for their child's age. This applies to cinema releases, DVDs and streaming video services such as Netflix.

WHAT ARE THE BBFC RATINGS?

BBFC ratings are broken down into seven age categories:

 Universal, suitable for all ages	 Parental Guidance required	 Suitable for people aged 12 and over	 Suitable for people aged 12 and over; anyone younger must be accompanied by an adult
 Suitable for people aged 15 and over	 Suitable for people aged 18 and over	 Adult content only available in specially licenced cinemas and specialist retailers	

WHAT ELSE CAN BBFC REVEAL?

Accompanied with the age suitability rating, BBFC also provide an additional warning regarding the content and what to expect, such as swearing, sexual content, violence and anything you may consider to be inappropriate for your child. In addition to this, the content is also rated in three levels: frequent, mild or strong.

LIMITATIONS OF BBFC RATINGS

It's important to note that there is no obligation on streaming video services to use or display BBFC ratings. Due to this, we advise that you check the rating online before your child streams the content. It may also be a good idea to watch the content first yourself or discuss it with other parents to help you decide whether or not it is suitable for your child.

Source: www.bbfc.co.uk

RATINGS FOR GAMES

PEGI (Pan European Game Information) is a content rating system that ensures all video games are labelled with a minimum age recommendation. These age recommendations are based on the types of content featured within a game. With each game, PEGI also provide a content descriptor that indicates the potential issues and concerns, including sex, violence, bad language and drugs.

WHAT ARE THE PEGI RATINGS?

PEGI ratings are split into age restriction and content descriptors. Additional 'content descriptors' help parents and children to understand the type of content featured within a particular game, including sex, fear, bad language, discrimination, gambling, drugs, violence, and in-game purchases. In combination, the two different ratings can provide a good level of information to help make informed decisions regarding the suitability for your child.

PEGI age ratings are broken down into five categories:

 www.pegi.info	 www.pegi.info	 www.pegi.info	 www.pegi.info	 www.pegi.info
---	--	---	---	---

PEGI content descriptors are broken down into eight categories:



LIMITATIONS OF PEGI RATINGS

It's possible for young people to buy games online without a required proof of age, opening them up to age-inappropriate content without you knowing. We advise that you regularly monitor your child's gaming activities and maintain a honest and healthy dialogue with them about the online world.

PARENTAL CONTROLS

It is a good idea to put in place parental controls for all online accounts which your child may use to purchase or download online games e.g. The App Store, Google Play Store, PlayStation Store and Microsoft Xbox Store etc.

Source: www.pegi.info

My Child is unwell, how long should they be absent from school?

We know how important it is that children are in school, the more they are in school the more they learn and the more successful they are.

The table below uses the latest guidance to help to clarify when children should attend school.

Coughs/ colds/temperature/ sore throat	Children are able to attend school Please give appropriate medication, if required, at home before school.
Sickness & Diarrhoea	Children can return to school 48 hours after the last episode.
Chicken Pox	Children can return to school once all the vesicles/scabs have crusted over.
Hand foot and mouth	Children are able to attend school if they are feeling well.
Impetigo	Children can return to school 48 after antibiotic treatment has started or when all lesions are crusted and healed.
Scarlet fever	Children can return 24 hours after starting appropriate antibiotic treatment.
Headlice	Children are able to attend school as soon as treatment has been given.
Conjunctivitis	Children can attend school.
Slapped cheek	Once the rash has developed children are ok to attend school.

Please report all absences to the School Office by phone (01440) 702376. Please do not use Class Dojo.

We are only able to administer prescribed medication on completion of a permission form from the office.

We are able to support children administer any eye or ear drops but we are unable to do this for them.